



Credit: Strauss Media House



## MKT Wedge Anchor BZ3 A4

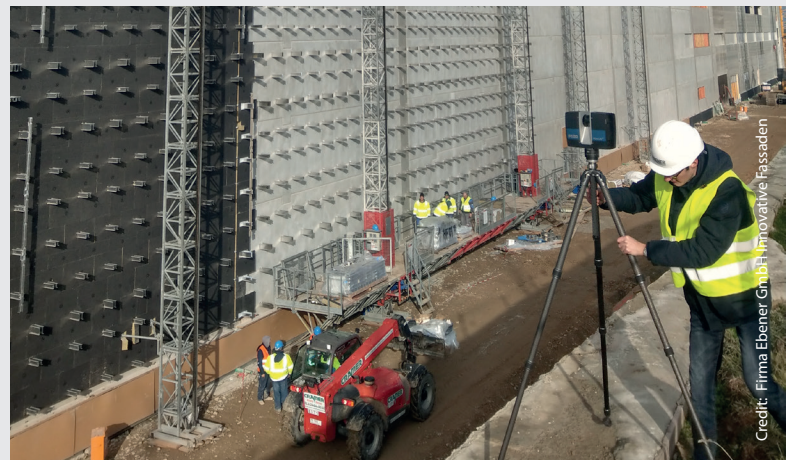
### Anchoring aluminum façade to the Strauss CI Factory, Schlüchtern, Germany

Strauss is a rapidly growing manufacturer of workwear, safety footwear, and personal protective equipment. Near its headquarters in Germany, the company recently completed the construction of a new logistics center, which also includes facilities for product customization. Its 26,000 m<sup>2</sup> glass and aluminum façade was designed, manufactured, and installed by Ebener Fassaden, one of Germany's leading façade contractors and a long-standing partner of MKT. The supporting elements

of the façade were anchored to the concrete walls using the MKT wedge anchor BZ3 A4. The use of stainless steel grade 316 ensures reliable performance over a design life of 50 years and beyond. The anchoring system was selected to withstand the demanding structural loads and environmental conditions at the site, including exposure to acid rain and exhaust emissions from heavy traffic on the adjacent motorway.



<b>Product</b>	MKT Wedge anchor BZ3 A4
<b>Steel grade</b>	Stainless steel A4 (SS 316)
<b>Quantity</b>	62,250 pcs
<b>Application</b>	Anchoring façade elements to exterior wall
<b>Contractor</b>	Ebener Fassade for Strauss



Credit: Firma Ebener GmbH Innovative Fassaden