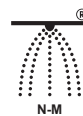




Credit: Tunnel Engineering Consultants



MKT Nail Anchor N

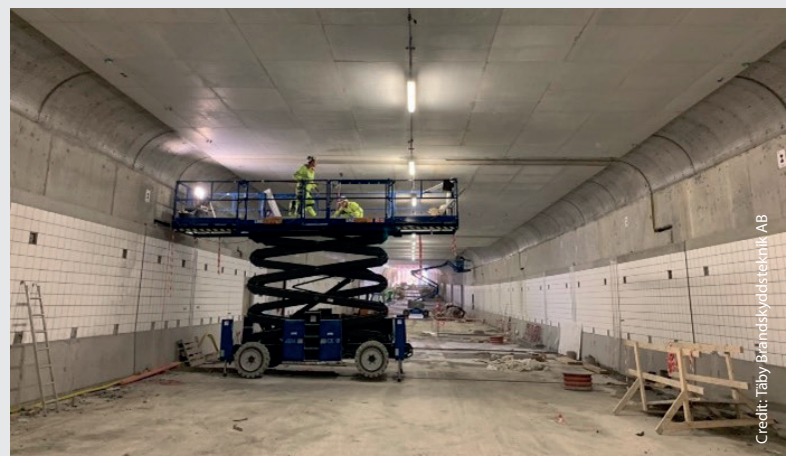
Anchoring of fire protection panels in the Mariefholm Tunnel, Gothenburg, Sweden

The Mariefholm Tunnel is a 500 m long road tunnel below the Göta River in Gothenburg, Sweden. It is connecting both sides of the city and the port. The client was Trafikverket for the Gothenburg Municipality, spending more than 300 Million EUR for the project. The tunnel opened in 2020 after 6 years of construction and is since then used by over 120,000 vehicles daily.

To ensure maximum safety in the event of a fire, large parts of the tunnel are lined with fire protection panels. These were attached to the concrete tubes with a total of 125,000 MKT nail anchors N-K-U with an extra-large washer. Because of the aggressive environment of a road tunnel with de-icing and near the sea, anchors made of high corrosion resistance steel were used.



Product	MKT Nail anchor N-K-U with extra-large washer
Steel grade	1.4529 High Corrosion Resistance steel (HCR)
Quantity	125,000 pcs
Application	Anchoring fire protection panels to concrete ceiling
Contractor	Täby Brandskyddsteknik AB for Züblin Scandinavia AB



Credit: Täby Brandskyddsteknik AB

Made in
Germany



... a solid connection